

LI-ION



CELL – BMZ 21700 52EM

TECHNICAL INFORMATION

Lithium Ion Rechargeable Battery

Name and Code

■ Cell Name: BMZ 21700 52EM

Cell Shape and Weight

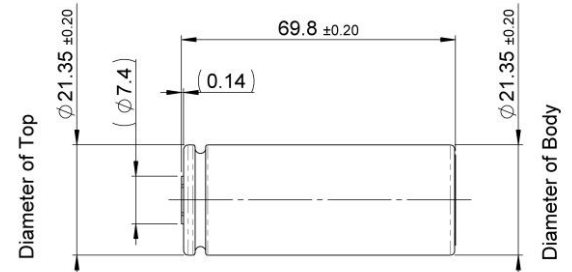
■ Cell Shape: cylindrical
■ Weight: 70.0 g average

Safety Regulation

■ UN, IEC, UL

Size (with plastic tube):

■ Diameter: 21.55 mm max
■ Length: 70.0 mm max



HIGH ENERGY

Performance

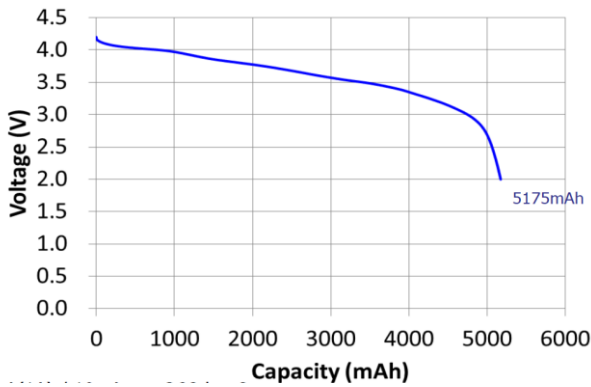
(at room temperature, 2.0 V cut off)

Nominal Capacity (0.2 C discharge)	5200 mAh	average capacity
Rated Capacity (0.2 C discharge)	5000 mAh	minimum capacity
Nominal Voltage	3.6 V	
Internal Impedance	TBD	frequency for AC 1 kHz

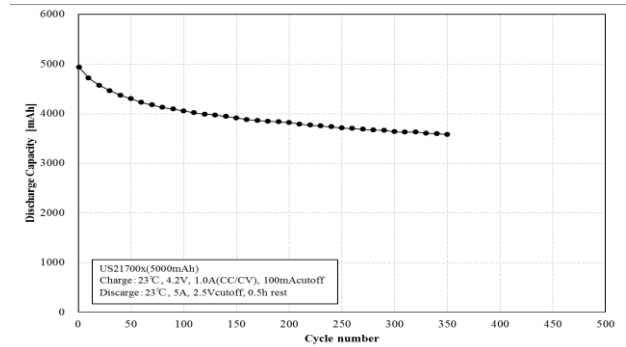
- Charge Method: CC-CV
- Maximum Charge Voltage: 4.25
- Maximum Charge Current: 1.0 C
- Maximum discharge current: 8.0 A
- Ambient Temperature: 23° C



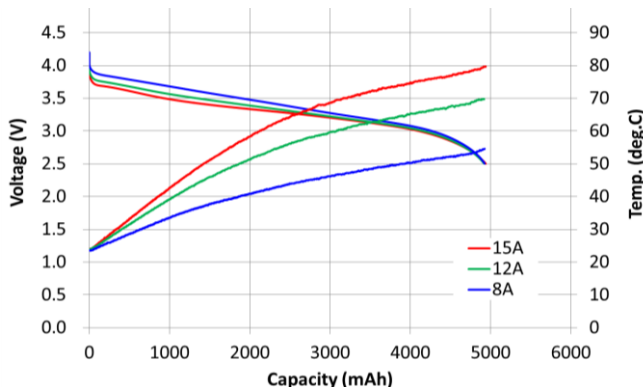
DISCHARGE CAPACITY



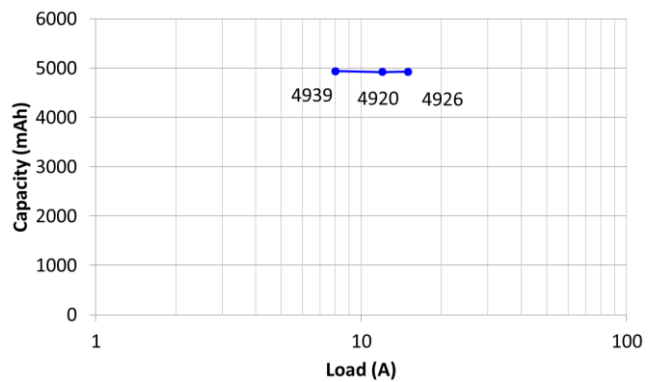
CYCLE LIFE PERFORMANCE ESTIMATION



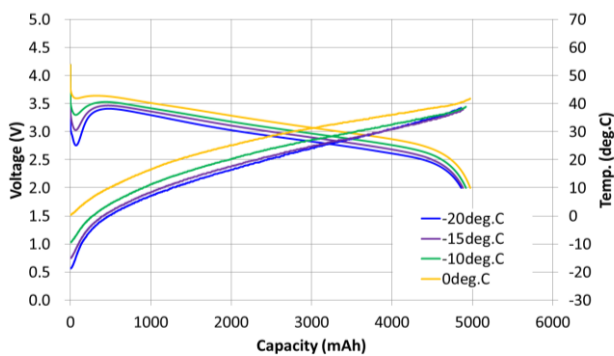
LOAD CHARACTERISTICS



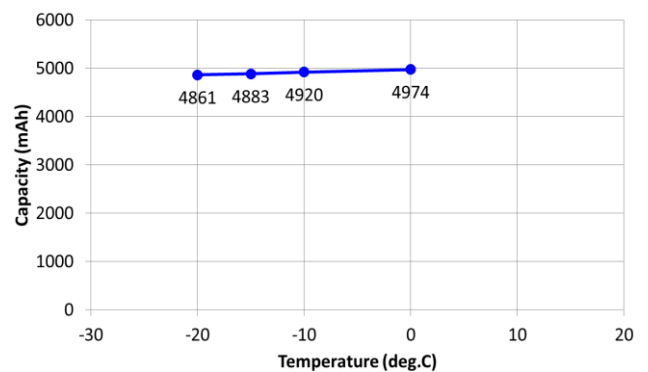
LOAD CHARACTERISTICS



TEMPERATURE CHARACTERISTICS



TEMPERATURE CHARACTERISTICS



Data is for reference use only. Not guarantee value.

BMZ GmbH | Am Sportplatz 28 | 63791 Karlstein am Main | Germany

Phone +49 61 88-9956-0 | Fax +49 61 88-9956-900 | mail@bmz-group.com | www.bmz-group.com