

LI-ION



CELL – BMZ 18650 30EL

TECHNICAL INFORMATION

Lithium Ion Rechargeable Battery

Name and Code

- Cell Name: BMZ 18650 30EL

Cell Shape and Weight

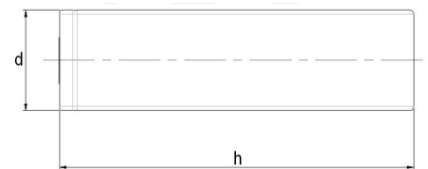
- Cell Shape: cylindrical
- Weight: 49 g

Safety Regulation

- UN, IEC, UL

Dimensions

- Diameter d: 18.29 ± 0.11 mm (Max. 18.40 mm)
- Height h: ≤ 65.15 mm



HIGH CAPACITY

- Charge Method: CC-CV
- Nominal Charge Current: 1.47 A
- Maximum Charge Current: 2.95 A
- Maximum Charge Voltage: 4.2 V
- Ambient Temperature: 23°C

Performance (at room temperature, 2.75 V cut off)		
Rated Capacity (0.2 C discharge)	3050 mAh	
Continuous Maximum Discharge Current	5,9 A (23°C)	
Energy Density	640 Wh/l	
Allowable Environment Temperatures	Charging: 0°C – 45°C	Discharging: -20°C – 60°C
Storage Temperatures	1 month -20°C – 60°C	3 months -20°C – 45°C
Internal Impedance	70 mΩ	measured by AC 1 kHz

